



CONNECTING ROD



December 2007

Oregon SAE Newsletter

Volume 12 Issue 06

Governing Board Meeting

No Board meeting for December. Have a great Holiday and we'll see you at Winter Social!

Lunch Meeting

What: Heavy Truck Frontal Crash Protection System Development
(SAE Paper 2007-01-4289)
When: December 7th 2007
Where: Delta Park Elmer's 9848 N. Whitaker Rd., Portland, OR
Cost: \$8/person
RSVP: Norm Ritchie at normritchie@freightliner.com by 12:00pm December 6th

Evening Tech Meeting

What: Winter Social
When: December 11th 2007
Where: Clyde's Prime Rib Restaurant and Bar 5474 NE Sandy Blvd. Portland
Cost: \$20 with meal
Students 50% off
RSVP Jason Wilkening at jasonwilkening@freightliner.com (503.745.9328)
Limit of 30 people

News/Announcements

Mark your calendars for Thursday Jan. 24 as Round 1 of the 2008 OSAE Karting Championship will be taking place at SyKart in Tigard. Check the Oregon SAE website for updates and a full series flyer coming soon.

Mechanical Engineering PE Review Course Winter 2008 at Portland State University
Class will be held on Tuesdays, January 8 – March 18, 2008 6:00 – 8:40 pm
PSU Campus Engineering Building, Rm. 510 (1930 SW 4th Avenue, Portland, Oregon)
includes course notes, problems and solutions, and PE Exam sample questions and solutions
Registration: (503) 725-4291 or email Joni Heveron at joni@cecs.pdx.edu

Section Officers, 2007-08

Chairman	Ross Nelson	(503)-745-5925	RossNelson@freightliner.com
Vice Chair	Vijay Gopalswamy	(503) 745-8749	VijayKGS@freightliner.com
Treasurer	Vijay Gopalswamy	(503) 745-8749	VijayKGS@freightliner.com
Secretary	Ben Hansen	(503) 745-6041	BenjaminHansen@Freightliner.com
Tech Meeting Coordinator	Keith Neubauer		kaneubauer@earthlink.net
Lunch Meeting Coordinator	Laurie DeBoard	(503) 745-9479	LaurieDeBoard@Freightliner.com
VC Student Activities / Scholarship	Katie Knudson	(503) 745-2004	KatieKnudson@Freightliner.com
VC Motorsports	Tony Corless	(503) 745-8856	TonyCorless@Freightliner.com
VC Membership / Company Rep	George Gvakharia	(503) 745-5975	georgegvakharia@freightliner.com
VC Investment Committee	Mike Eagan	(503) 703-0455	bandaloop@comcast.net
VC AWIM Activities	Stephen Thorud	(503) 745-7141	StephenThorud@Freightliner.com
Delegate ANC	Jason Wilkening	(503) 745-9328	JasonWilkening@Freightliner.com
First Alternate	George Freund	(503) 297-2776	George@GNFreund.com
Webmaster	Jason Wilkening	(503) 745-9328	JasonWilkening@Freightliner.com
Newsletter Editor	Andre Susanto	(503) 745-2185	AndreSusanto@Freightliner.com



Winter Social

Winter Social

Celebrate the holidays with Oregon SAE

The Oregon SAE Governing Board

Cordially invites you and a guest to the

Oregon SAE Winter Social Event

An evening of merriment with the Oregon SAE community during this festive season

Tuesday, December 11

at 6 PM

Clyde's Prime Rib Restaurant and Bar

5474 NE Sandy Blvd.

Portland

Menu and map enclosed

R.S.V.P. to Jason Wilkening

503.745.9328

jasonwilkening@freightliner.com

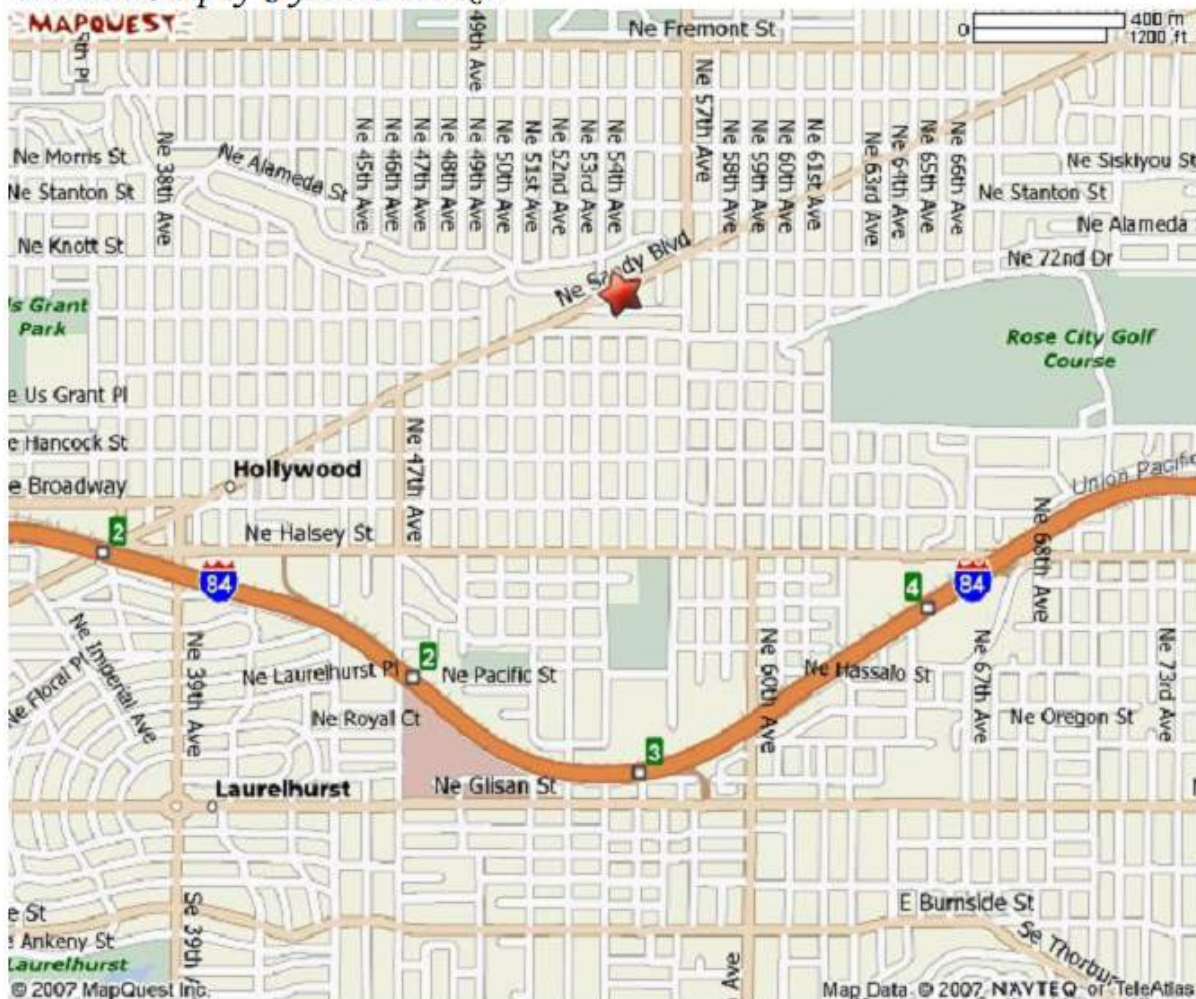
Online at: www.oregonsae.org

Winter Social Event Details:

Cost per person is \$20

No Host Bar

Overview Map of Clyde's Prime Rib:



Informal cocktail reception following dinner at

*Gustav's Bier Stube
5035 NE Sandy Blvd
Portland*

OREGON SAE WINTER SOCIAL DINNER MENU

BEEF

SIGNATURE PRIME RIB OF BEEF

We are proud to feature only the finest, aged, corn fed Angus beef. Our Prime Rib dinner is a generous meal, carved tableside and served with our own creamed horseradish. Served with soup or salad, and your choice of baked potato, garlic mash potatoes, herbed rice or house fries and seasonal vegetable

Petite serving
Regular serving

Flat Iron Steak

A delicious cut of beef, aged to perfection and charbroiled to order, served with soup or salad, and your choice of baked potato, garlic mash potatoes, herbed rice or house fries and seasonal vegetables

SEAFOOD

Pan Seared Salmon Florentine

Northwest wild salmon atop a delicious bed of spinach sautéed with Portobello mushrooms, parmesan cheese and fresh herbs, served with seasonal vegetables and soup or salad

Stuffed Pacific Halibut

Halibut stuffed with bay shrimp, cream cheese, spinach, and garlic, encrusted with parmesan cheese and baked until golden brown, served with seasonal vegetables, herbed rice and soup or salad

Seafood Platter

A seafood lover's feast, deep fried oysters, golden prawns, flakey halibut and appetizing scallops served with tartar sauce, house fries and soup or salad

Grilled Gulf Prawns

Large wild gulf prawns skewered with fresh seasonal vegetables and charbroiled to perfection, served with drawn butter, herbed rice and soup or salad

Fusion Crab Cakes with Prawns & Mango Salsa

Savory fusion crab cakes topped with large grilled gulf prawns and a delicious mango salsa, served with herbed rice and soup or salad

CHICKEN

Chicken Cordon Bleu

A boneless, skinless breast of chicken, stuffed with lean ham and Swiss cheese, lightly breaded and baked until golden brown, served with seasonal vegetables, herbed rice and soup or salad

Thai Chicken and Prawns

A tender grilled chicken breast and large gulf prawns topped with green peppers and onions, drizzled with a delicious spicy Thai peanut sauce, served atop a bed of herbed rice, with seasonal vegetables and soup or salad

PORK

Grilled Pork Chops

Charbroiled, herb crusted bone-in pork chops finished with a sweet roasted garlic and mushroom demi glace, served on a bed of garlic mash potatoes with seasonal vegetables and soup or salad

Caribbean Baby Back Ribs

Slow cooked until tender, seasoned with our special Caribbean jerk BBQ sauce and served with house fries, and coleslaw

PASTA

Butternut Squash and Gorgonzola Ravioli

Organic butternut squash, onion, garlic, gorgonzola, parmesan and ricotta cheese ravioli nestled in our creamy parmesan and garlic sauce, topped with freshly grated cheese and black pepper served with soup or salad

Beef Stroganoff

Tender Prime Rib of beef morsels, mushrooms and a cream sauce served over egg noodles served with soup or salad

Seafood Fettuccini

Our select mix of, salmon, prawns and Manila clams, sautéed with garlic, herbs and mushrooms, finished in a delicate cream sauce served with soup or salad

SENSATIONS

Creamy Chocolate Mousse

Made from scratch by our chef

Cold Temptations

Vanilla Ice Cream

Heavy Truck Frontal Crash Protection System Development An SAE International Paper Presentation

What: Heavy Truck Frontal Crash Protection System Development
(SAE Paper 2007-01-4289)
When: December 7th 2007
Where: Delta Park Elmer's 9848 N. Whitaker Rd., Portland, OR
Cost: \$8/person
RSVP Norm Ritchie at normritchie@freightliner.com by 12:00pm December 6th

Synopsis

Establishing the crash pulse parameters for heavy trucks must consider a great variety of vehicle configurations and operating over a wide range of gross vehicle weight and sometimes function in extreme duty environments. A process was developed using both vehicle crash tests and computer simulation to establish crash sensor settings that can meet the requirements of these variations.

Dan Schmit, Bruce Koepke, and Norm Ritchie will be presenting this technical paper for the SAE lunch meeting on 12/7. Dan was Freightliner's primary author and represented Freightliner in giving the presentation of this paper at the SAE Commercial Vehicle Conference in Chicago on November 1st.

Paper Abstract:

Heavy trucks are produced with a great variety of vehicle configurations, operate over a wide range of gross vehicle weight and sometimes function in extreme duty environments. Frontal crashes of heavy trucks can pose a threat to truck occupants when the vehicle strikes another large object such as bridge works, large natural features or another heavy-duty vehicle. Investigations of heavy truck frontal crashes indicate that the factors listed above all affect the outcome for the driver and the resulting damage to the truck.

Recently, a new chassis was introduced for on-highway heavy truck models that feature frontal airbag occupant protection. This introduction presented an opportunity to incorporate the knowledge gained from crash investigation into the process for developing the crash sensor's parameter settings. Extensive finite element simulation of the vehicles and crash events, with an additional focus on the crash sensor requirements, analyzed many variables and led to an efficient test plan.

Specialized barrier crash testing combined with this simulation to produce the input necessary to reliably discriminate between must-fire and no-fire frontal crash events. This development process resulted in a robust crash-sensing system and effective occupant restraint systems for heavy trucks equipped with this new chassis.