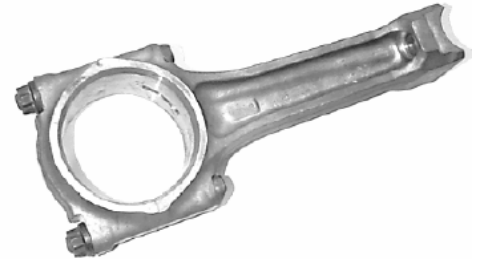


# CONNECTING ROD

The Oregon SAE Newsletter

April 2007

Volume 11 Issue 11



Online at: [www.oregonsae.org](http://www.oregonsae.org)

---

## Tuesday April 24<sup>th</sup>, 4:30-5:15 PM: OSAE Governing Short Board Meeting

Location: Freightliner, 4747 N Channel Ave, 97217 Portland, OR. Room 1J. [map](#)

## Thursday, April 12<sup>th</sup> at 5:30 pm: OSAE Karting Challenge: Round 2 of 4.

At: SyKart Indoor Racing, 8205 SW Hunziker St Tigard, details: <http://oregonsae.org/Karting.html>

## Thursday, April 26<sup>th</sup>, 5:30: Introduction to Six Sigma , see page 3.

**What:** Sigma Blackbelt, John Rokus introduces this methodology to improve quality & productivity.

**Where:** Freightliner Corporate Conference Center, 4575 N Channel Ave, Portland [map](#)

**Cost:** \$10 for members and guests; \$12 for non members. Dinner and refreshments are provided.

**RSVP by April 25<sup>th</sup>** please contact [AndreSusanto@freightliner.com](mailto:AndreSusanto@freightliner.com) or 503-745-2185

## Friday, April 27<sup>th</sup>, 11:45, Lunch: I-205 Corridor MAX Light Rail Project, see page 2.

**What:** TriMet will present a general overview of the project and answer your questions. Topics include: Traffic Studies and other research, design alternatives, funding, timeline and future plans.

**Where:** TriMet, 710 NE Holladay St, Portland, OR, 97232 – Conference Room 1, [map](#)

**Cost:** \$8 if you opt for lunch, otherwise free.

**RSVP required by April 25<sup>th</sup>** due to a 25-person room capacity and for a headcount on the catered lunch. Please contact Jason Wilkening ([JasonWilkening@Freightliner.com](mailto:JasonWilkening@Freightliner.com)),

**FYI:** April 18, Oregon ASME has arranged a tour of Freightliner Truck Plant, details on page 3.

**Volunteers needed:** for Oregon Trail Rally and MESA day, detail on page 4.



Advertise here and reach over 700 Oregon engineers and managers in the mobility advancement field.

For details please contact: [GeorgeGvakharia@Freightliner.com](mailto:GeorgeGvakharia@Freightliner.com) or call 503-745-5975

### Section Officers, 2006-07

Chairman  
Treasurer  
Secretary  
Tech Meeting Coordinator  
Lunch Meeting Coordinator  
VC Student Activities / Scholarship  
VC Motorsports  
VC Membership / Company Rep  
VC Investment Committee  
VC AWIM Activities  
Delegate ANC  
First Alternate  
Webmaster  
Newsletter Editor

Andre Susanto (503) 318-2547  
Paul Labberton (503) 745-7451  
Ben Hansen (503) 745-6041  
Open, volunteers?  
Stephen Thorud (503) 745-7141  
Mike Dragulin (503) 745-6558  
Vijay Gopalswamy (503) 745-8749  
Dave Van Dyke (503) 968-6391  
Mike Eagan (503) 703-0455  
Ryan Jefferis (503) 745-6361  
Jason Wilkening (503) 745-9328  
George Freund (503) 297-2776  
Jason Wilkening (503) 745-9328  
George Gvakharia (503) 745-5975

[AndreS@email.sae.org](mailto:AndreS@email.sae.org)  
[PaulLabberton@Freightliner.com](mailto:PaulLabberton@Freightliner.com)  
[BenjaminHansen@Freightliner.com](mailto:BenjaminHansen@Freightliner.com)  
[StephenThorud@Freightliner.com](mailto:StephenThorud@Freightliner.com)  
[MikeDragulin@Freightliner.com](mailto:MikeDragulin@Freightliner.com)  
[VijayKGS@Freightliner.com](mailto:VijayKGS@Freightliner.com)  
[DVanDyke@vgoinc.com](mailto:DVanDyke@vgoinc.com)  
[RyanJefferis@Freightliner.com](mailto:RyanJefferis@Freightliner.com)  
[JasonWilkening@Freightliner.com](mailto:JasonWilkening@Freightliner.com)  
[George@GNFreund.com](mailto:George@GNFreund.com)  
[JasonWilkening@Freightliner.com](mailto:JasonWilkening@Freightliner.com)  
[GeorgeGvakharia@Freightliner.com](mailto:GeorgeGvakharia@Freightliner.com)



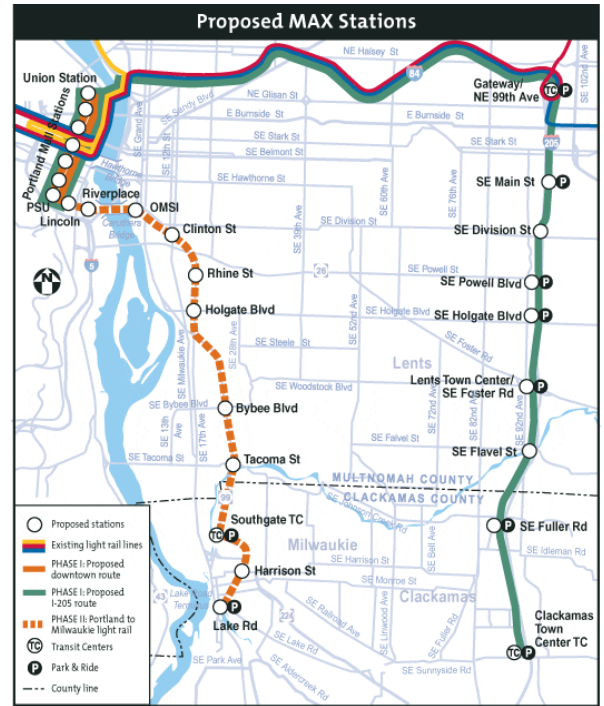
# I-205 Corridor MAX Light Rail Project

Alan Lehto and Dave Unsworth of TriMet will present a general overview of the project as well as answer your questions. Topics to be covered include: Traffic Studies and other research, design alternatives, funding, timeline and future plans.

## Background

The [City of Portland](#), TriMet and [Metro](#) are collaborating in a regional effort to extend light rail service between Portland City Center and Clackamas County. As a part of this effort—dubbed the [South Corridor Project](#)—light rail service will be added along I-205 between Gateway Transit Center and Clackamas Town Center.

An important part of the I-205 MAX project includes constructing a new light rail alignment on the [downtown Portland Mall](#), along 5th and 6th avenues. For more than two decades, plans have called for adding light rail to the Mall. Future growth in MAX use and new light rail lines such as I-205 and a planned extension to [Milwaukie](#) require more capacity than the current east-to-west alignment can handle. It will allow the Interstate MAX Yellow Line to move from the Blue and Red Line tracks downtown to the new Mall tracks and be ready to extend south for a future Milwaukie light rail extension.



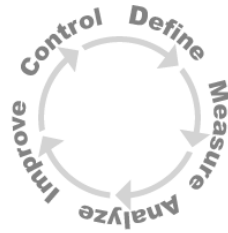
**Location:** TriMet, [710 NE Holladay St](#), Portland, OR, 97232 – Conference Room 1

- Time:** 11:45 Lunch served
- 12:00 Presentation begins
- 12:30 QA Begins
- 12:45 Meeting adjourned

**Cost:** \$8 if you opt for lunch, otherwise free



**RSVP:** Please contact Jason Wilkening ([JasonWilkening@Freightliner.com](mailto:JasonWilkening@Freightliner.com)), due to a 25-person room capacity and for a headcount on the catered lunch.



# Six-Sigma as a Problem Solving Method and Design and Optimization Tool

by

John Rokus, Six Sigma Black Belt

Six-Sigma has been described as an effective way to change and revitalize a group to achieve distinctive results in quality, productivity, and profits. It is a fact based statistical problem solving methodology that, when implemented correctly, can provide dramatic results.

This method is not only useful for product quality assurance, but the tools available via this method are also valid as a design and optimization tool. As engineers, we can use some of these tools on our day to day job.

John Rokus is a Six-Sigma Blackbelt at Freightliner where he works as an Engineering Process Manager for Continuous Improvements. Prior to his current position, he was supervisor of a Manufacturing Engineering group.

- What:** Introduction to Six Sigma  
**Where:** Freightliner Corporate Conference Center  
4575 N Channel Ave, Portland [map](#)  
**When:** April 26, 5:30pm  
**Cost:** \$10 for members and guests; \$12 for non members  
Dinner and refreshments are provided  
**RSVP required by April 25<sup>th</sup>** please contact Andre Susanto at [andresusanto@freightliner.com](mailto:andresusanto@freightliner.com)  
Or 503-745-2185
- 

**FYI:**  
The Oregon Section of ASME has arranged a tour of Freightliner Truck Plant on April 18 at 5:45pm. The address is 6936 North Fathom Street, Portland, OR 97217.  
Directions: From N Interstate Avenue, take N Going Street and then N Basin Avenue to get to the plant. For a map, go to <http://www.sections.asme.org/oregon/>

When you arrive, please sign in at the security desk. Please wear long-sleeved shirt, long pants, and shoes that cover the toes. If possible, bring your own safety glasses and ear plugs.

The agenda will be:  
5:45-6:00 Sign-in  
6:00-6:15 - History of Freightliner  
6:15-6:45 - Features of the truck plant  
6:45-7:45 - Tour  
7:45-8:00 Q. & A. and sign-out

To register, use Acteva online event registration:  
<http://www.acteva.com/go/asmeoregon/>

## Calls for volunteers:

### Volunteers needed for Oregon Trail Rally.

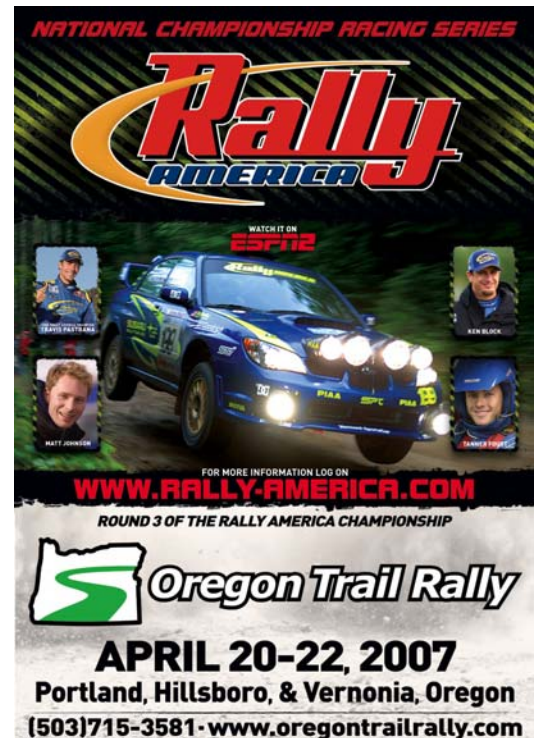
The 2007 Oregon Trail Rally will take place on April 20-22<sup>nd</sup>. This is the 3<sup>rd</sup> round of the Rally America National Championship, which will be broadcast on ESPN2. The championship is very exciting this year as competitors try to qualify for a spot in the X-Games RallyCar competition, taking place in early August.

Volunteers are needed to help the event run smoothly. No special skills are needed. Volunteers are needed to marshal crossroads in the woods, mark timecards, and direct rally traffic. HAM radio operators are also used throughout the event, and new HAMS are always welcome.

The Friday event takes place at Portland International Raceway. The Saturday and Sunday portion takes place in the area surrounding Vernonia and along Highway 26.

Anyone interested in helping at the event may contact Gloria Hale, volunteer coordinator. Gloria's email address is: [volunteers@oregonrally.com](mailto:volunteers@oregonrally.com)

More information about the event can be found at: [www.oregontrailrally.com](http://www.oregontrailrally.com)



---

### Volunteers needed for MESA (Mathematics, Engineering, Science Achievement)

It's that time of year again- to start planning for MESA Day 2007, Friday, May 18th. The event will be held in the Peter Stott Center here at PSU. We will have about 300 students participating in this event.

We would love you have you volunteer this year because last year was such a success. This years activities include: Animal Radio Tracking, Balsawood Bridge, Trebuchet, College Poster Boards, Discovery Center, Math Scavenger Hunt, Egg Drop, Vernier Laboratory and Wind-Powered Boats.

Although this is a day-long event, we would not ask you to commit to a full day of volunteering. If you'd like to judge or assist at an activity, volunteer shifts run from 10am-12:15pm and 12pm-2:15pm. We also have other opportunities to help out- with registration, set-up, and clean-up, etc. The timing for these volunteers is slightly different.

For more information: <http://www.mesa.pdx.edu/> or call 503-752-4680.

If you can help out, please contact: Jamie Jones [ijones@pdx.edu](mailto:ijones@pdx.edu)